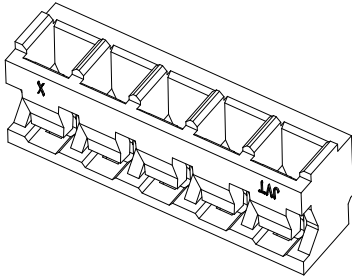
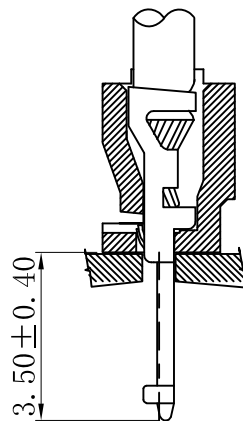


## Specifications



- Voltage rating: 125V AC, DC
- Current Rating: 2A, AC, DC
- Withstand voltage: 500V AC/minute
- Contact resistance: 10mΩ max
- Insulation resistance: 1000MΩ min
- Temperature range: -40°C ~ +105°C
- Suitable JVT2030T series Terminal
- Compliant with RoHS and REACH
- Contact JVT for details

## Assembly layout



**JVT2030H**

2.0mm Pitch housing

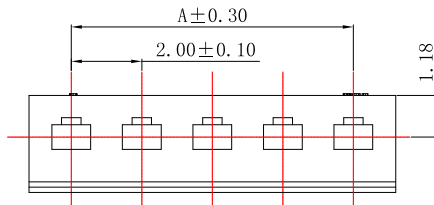
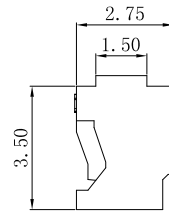
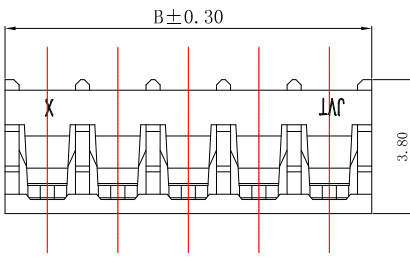
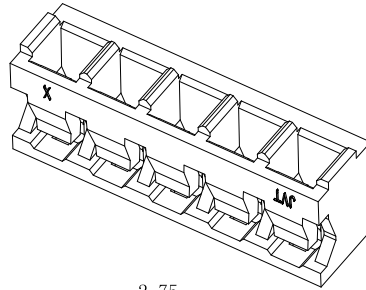
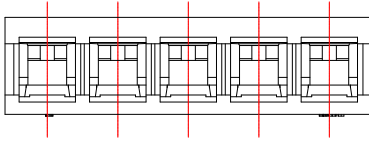
HOUSING

Part No.: JVT2030HNO-XXL

Material: PA66 UL94V-0

Mates With Part(s): JVT2030 Terminal

JVT2030HNO-XX  
Logo Series NO. Housing PIN NO. PA66 UL94V-0

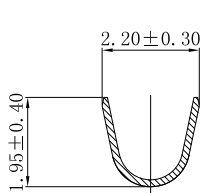
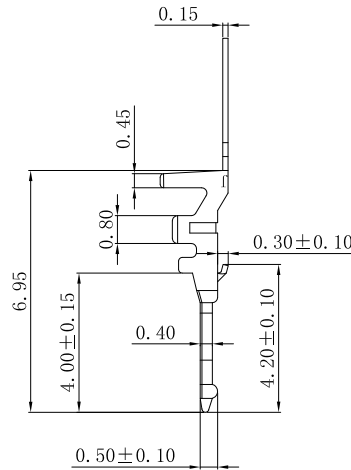
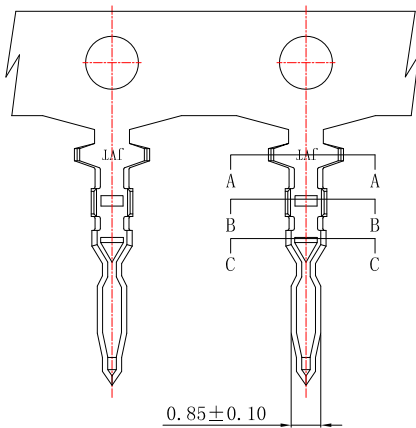


Poles	Dimensions		Poles	Dimensions	
	A	B		A	B
02	2.00	4.40	09	16.00	18.40
03	4.00	6.40	10	18.00	20.40
04	6.00	8.40	11	20.00	22.40
05	8.00	10.40	12	22.00	24.40
06	10.00	12.40	13	24.00	26.40
07	12.00	14.40	14	26.00	28.40
08	14.00	16.40	15	28.00	30.40

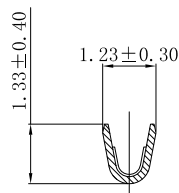
**JVT2030T**

2.0mm Pitch Crimp Terminal

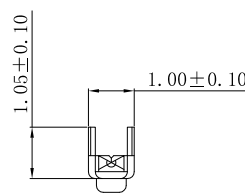
JVT2030TP-SNS  
Logo Series NO. T-Terminal B-Brass S-Stamping before Plating SN-Tin Plated



SEC: A-A



SEC: B-B



SEC: C-C

JVT2030TP-SNS	Brass	Tin Plated	AWG#26-30	1.40mm(Max)	JVT2030 HOUSING
PART NO	Material	Finish(Pin)	Wire Range	Insulation O.D.	Mates With Part(s)